

INTRODUCTION

Current European practice in structural engineering is tending more and more to accept the benefits to be gained from performance-based approaches to fire design. This conference will focus on the application of simple and advanced design methods for concrete, steel and timber structures. Particularly relevant themes will be fire modelling, simulation of the heat transfer between the fire and the structure, and modelling of structures at elevated temperatures using numerical methods or the structural Eurocodes. Both case studies of successful applications of performance based structural fire safety design as well as new research studies on the relationships between experimental findings, calculation methods and FE simulations are welcome. Acknowledged experts and specialists in design against fire from all over the World will participate, thus offering a unique opportunity to share ideas and to acquire knowledge.

VENUE



The Conference will be held at The Czech Technical University in Prague, and will take place during the Czech Presidency of the EU. It is jointly organised by The Professional Chamber of Fire Protection and The Ministry of The Interior, General Directorate of Fire Rescue Service of the Czech Republic.

Thakurova 7
CZ 166 29 Praha
Czech Republic
Tel.: ++420 224 354 772
Fax: ++420 233 337 466
URL: www.fsv.cvut.cz

PRE- AND POST-EVENT

Visits to the Josef Underground Educational Facility (see www.uef-josef.eu), and the PAVUS fire testing facility in Veselí n. Lužnicí, may be arranged, depending on the numbers of delegates interested, 18 and 21 Feb. 2009.

CONFERENCE TOPICS

- Case studies of fire engineering of concrete, steel, timber and composite structures
- Multi-storey, single-storey and residential buildings
- Material properties for fire design
- Application and development of protection materials
- Detailing and connections
- Fire modelling
- Heat transfer
- Structural behaviour
- Assessment after fire and forensic engineering
- Repair after fire
- Application and development of standards
- Validation of models by testing

ABSTRACT

We would like to invite prospective authors to submit extended Abstracts on any of the above topics. These Abstracts should be written in English, and have a length of about 200 words, indicating the title of the communication, the authors, affiliation, address and other contact details including email address. An Abstract may be sent via the Conference registration webpage, by email to or by surface mail to the Conference secretariat. The closing date for Abstracts is 30 September 2008.

ORAL PRESENTATIONS, POSTERS AND PAPERS

Papers to be presented orally at the Conference will be selected on the basis of the Abstracts. It is expected, that all authors will be prepared to present their work orally. Depending on the number of abstracts received and on nature of their content, some authors may be invited to present their work in poster format.

The official language of the conference is English.

IMPORTANT DATES

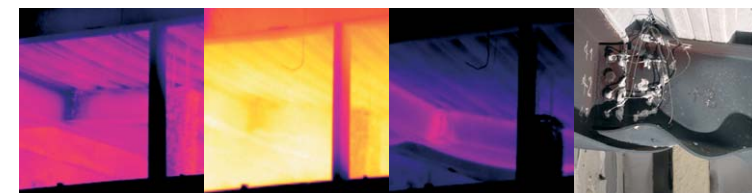
Submission of Abstracts	30 September 2008
Acceptance of Abstracts	31 October 2008
Early Registration	30 November 2008
Submission of Full Papers	15 January 2009
Conference	19-20 February 2009

ORGANIZING COMMITTEE

DUDÁČEK Aleš, Czech Republic
KREGL František, Czech Republic
KAISER Rudolf, Czech Republic
KUKLÍK Petr, Czech Republic
PROCHÁZKA Jaroslav, Czech Republic
SOKOL Zdeněk, Czech Republic
ŠTUBEROVÁ Magdaléna, Slovensko
VAŠKOVÁ Jitka, Czech Republic
WALD František, Czech Republic, chairman

INTERNATIONAL SCIENTIFIC COMMITTEE

ALFAWAKHIRI Farid, USA
BITTNER Zdeněk, Czech Republic
BURGESS Ian, United Kingdom, chairman
DEHN Frank, Germany
FRANSEN Jean-Marc, Belgium
GAMBAROVA Pietro, Italy
CHOI Sengkwon, Korea
KHOURI, Gabriel A., United Kingdom
KODUR Venkatesh, USA
KÖNIG Jürgen, Germany
LEJTENA J.M., The Netherlands
LI Guo Qiang, China
LUO Ming Chun, China (Hong Kong)
MAHENDRAN Mahen, Australia
MORENTE Fernando Belmez, Spain
NADJAI A., United Kingdom
OKSANEN Tuuli, Finland
SCHAUMANN Peter, Germany
TAERWE Luc, Belgium
TAN Kang Hai, Singapore
VASSART Olivier, Luxembourg
VELJKOVIC Milan, Sweden
VILA REAL Paulo, Portugal
WANG Yong, United Kingdom
ZAHARIA Raul, Romania
ZHAO Bin, France



The illustrative figures represent the opportunity of colleagues from Czech Technical University in Prague, University in Coimbra and Slovak Technical University in Bratislava to work on the seventh large fire test in Cardington.

REGISTRATION

Participation is limited to 100 persons, in order to encourage deeper interaction between the participants, allowing the discussion of their interests in the fire design, from fire modelling to structural performance checks.

All those intending to participate are kindly requested to send an e-mail to the Secretariat.

REGISTRATION FEES

	Early registration Before 30 Nov. 2008	Late registration After 30 Nov. 2008
Participants	275 €	350 €
Students	175 €	300 €
Accompanying persons	125 €	150 €

The fee covers

- The Conference Proceedings
- Participation in all scientific sessions
- Lunches and coffee breaks
- Conference Banquet

Note that

- For a paper to be included in the final programme of the Conference it is necessary that at least one of the authors registers for the Conference and pays her/his registration fee.
- Students should present a supervisor's letter confirming their status.
- The student fee does not cover the Conference Banquet.
- The fee for Accompanying persons covers the Conference Banquet, sightseeing in Prague with lunch on the 19 February 2009.
- The final fee may vary due to changes of VAT in Czech Republic and exchange rate of CZK to €.

Payment

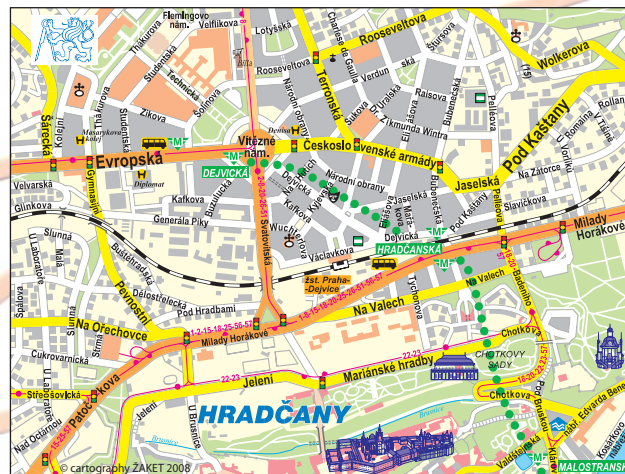
- Bank transfer
- Credit card VISA, EC/MC, American Express

The details of payment technique, rules for cancellation and refunds are described at conference webpage.

ACCOMMODATION

Hotel / hostel (category)	Address / Per room per night
1. Palace *****	Panska 12, Praha 1 About 200–210 €
2. Diplomat – standard ****	Evropska 15, Praha 6 About 135–140 €
3. Modra ruze – standard ****	Rytirska 16, Praha 1 About 140–160 €
4. Pyramida ****	Belohorska 24, Praha 6 About 80–90 €
5. Novomestsky hotel ****	Reznicka 4, Praha 1 About 70–80 €
6. Denisa ***	Narodni obrany 33, Praha 6 About 50–60 €
8. Masarykova hostel ***	Thakurova 1, Praha 6 About 35–45 €

2, 6, 8 – 3–10 min walking to venue; 1, 3, 5 – downtown, 10 min by the metro line A; 4 – close to the Prague Castle, 10 min by bus. The actual prices may be found at the Conference web page.



SECRETARIAT AND INFORMATION

General secretariat and information

Mrs. Kateřina Mrázková
katerina.mrazkova@fsv.cvut.cz

Information about hotel reservation and payment

Mrs. Terézia Němcová
terezia.nemcova@fs.cvut.cz



Czech Technical University in Prague

CALL FOR PAPERS

International Conference APPLICATIONS OF STRUCTURAL FIRE ENGINEERING 19–20 February 2009

